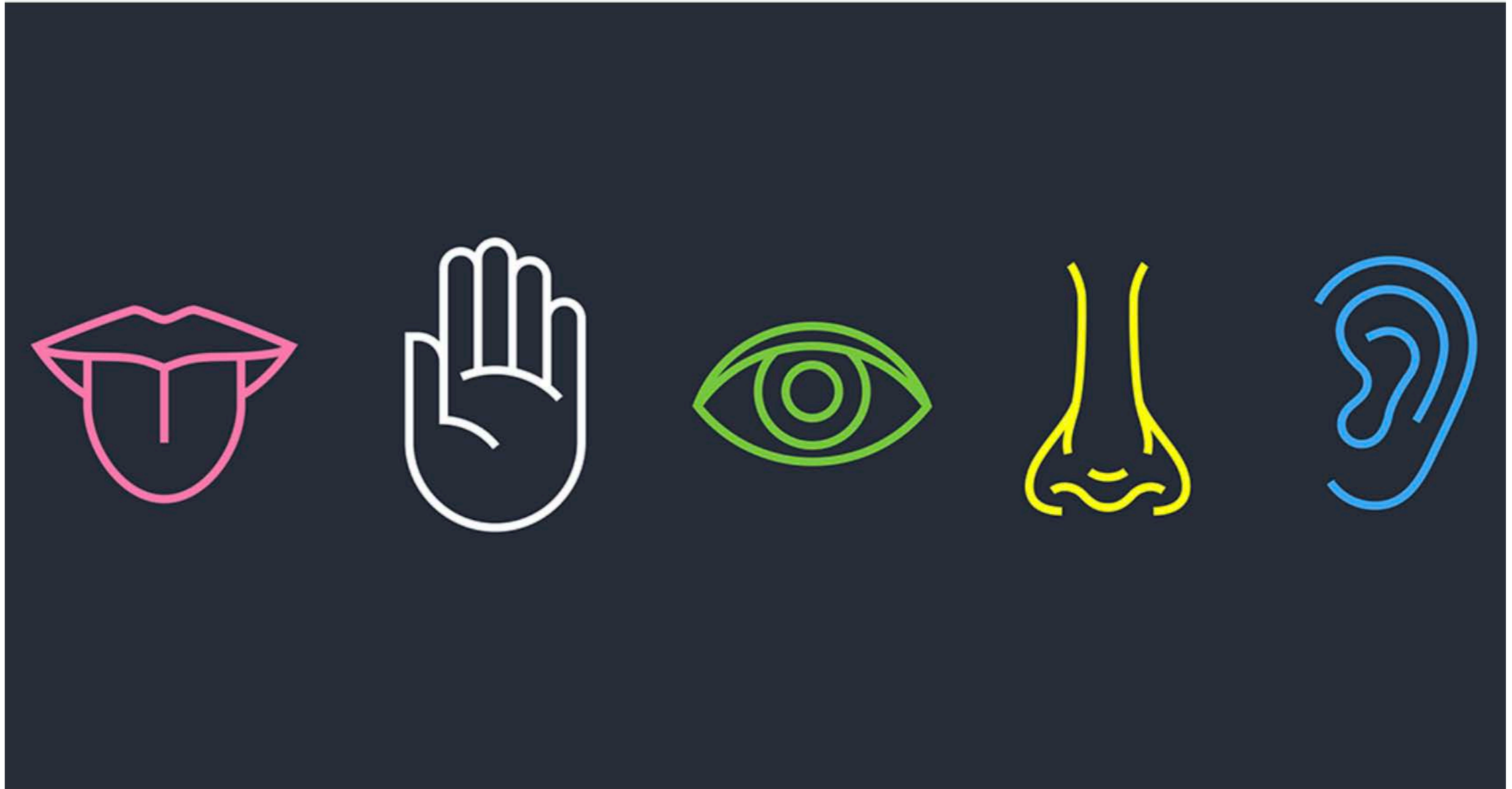


## NURTURING THE ESSENCE of WHAKATU NELSON



**5 senses  
gut feeling**

# A Pattern Language

Towns · Buildings · Construction



Christopher Alexander

Sara Ishikawa · Murray Silverstein

WITH

Max Jacobson · Ingrid Fiksdahl-King

Shlomo Angel

253 patterns or  
rules of thumb  
gathered from  
all over the world  
for towns  
neighbourhoods  
houses  
gardens  
rooms

relationships in the built environment  
that work and have stood the test of time

## 11. LOCAL TRANSPORT AREAS

build up these larger city patterns from the grass roots, through action essentially controlled by two levels of self-governing communities, which exist as physically identifiable places;

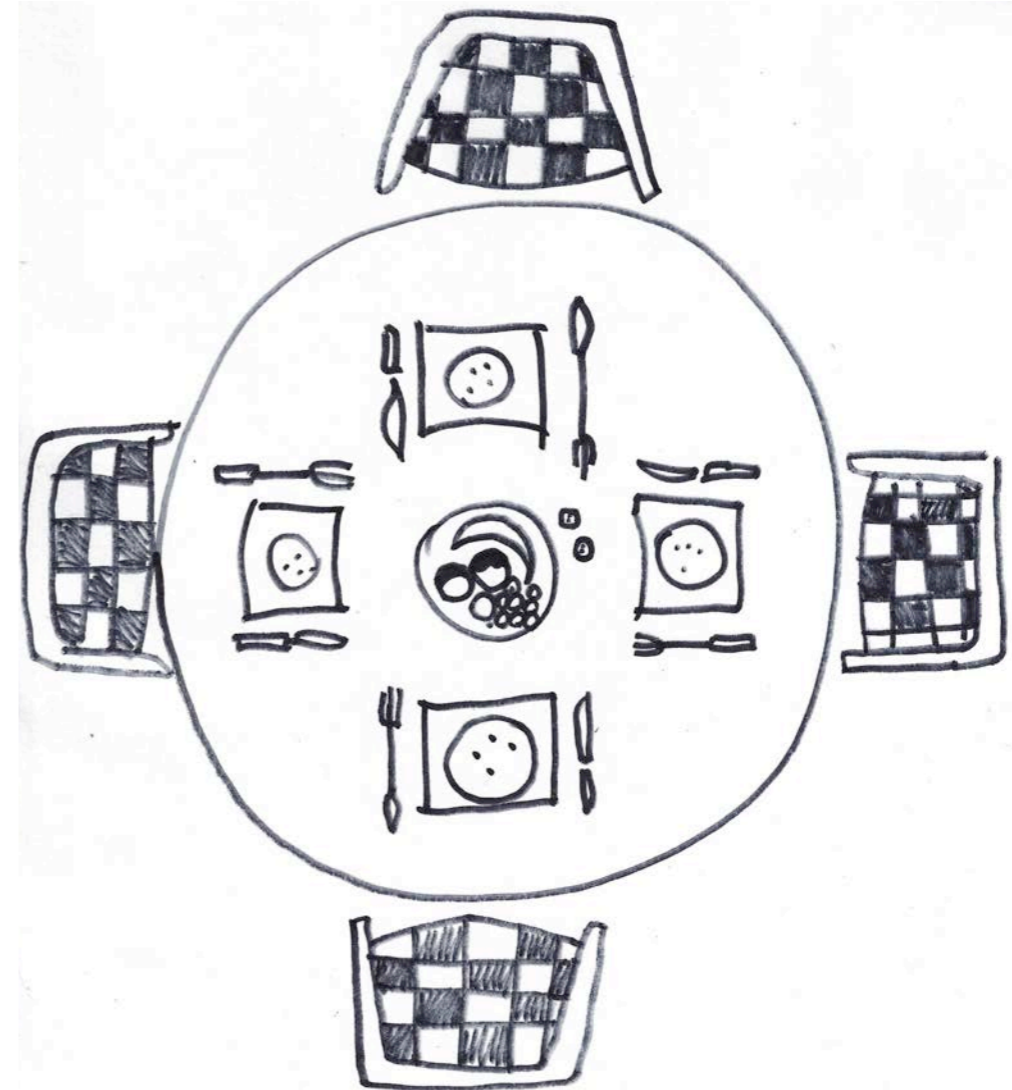
12. COMMUNITY OF 7000
13. SUBCULTURE BOUNDARY
14. IDENTIFIABLE NEIGHBORHOOD
15. NEIGHBORHOOD BOUNDARY

connect communities to one another by encouraging the growth of the following networks;

16. WEB OF PUBLIC TRANSPORTATION
17. RING ROADS
18. NETWORK OF LEARNING
19. WEB OF SHOPPING
20. MINI-BUSES

establish community and neighborhood policy to control the character of the local environment according to the following fundamental principles;

21. FOUR-STORY LIMIT
22. NINE PER CENT PARKING



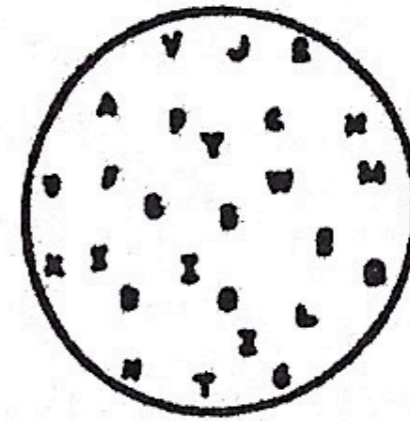
**network.... no pattern is isolated, but part of a sequence of patterns**

what gives something life?

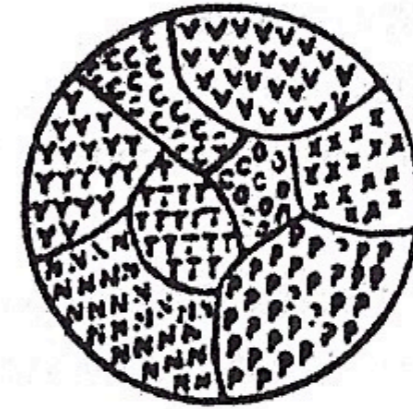
want to look at 3 patterns

- **Mosaic of subcultures**
- **Network of learning**
- **Communal eating**

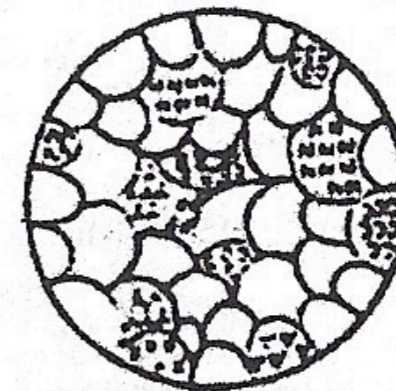
# 8 MOSAIC OF SUBCULTURES\*\*



*The heterogeneous city.*



*City of ghettos.*



*Mosaic of subcultures.*

# SHARED COMMUNITIES WHAKATŪ NELSON

— Arts, culture and heritage —

*Engagement with Nelson Migrant  
and Former Refugee Communities*

August 2022

Report by Shared Communities Consortium  
Funded by Manatū Taonga  
Ministry for Culture and Heritage  
Te Urungi - Innovating Aotearoa

difficult to connect and the need of event places to celebrate their own cultures



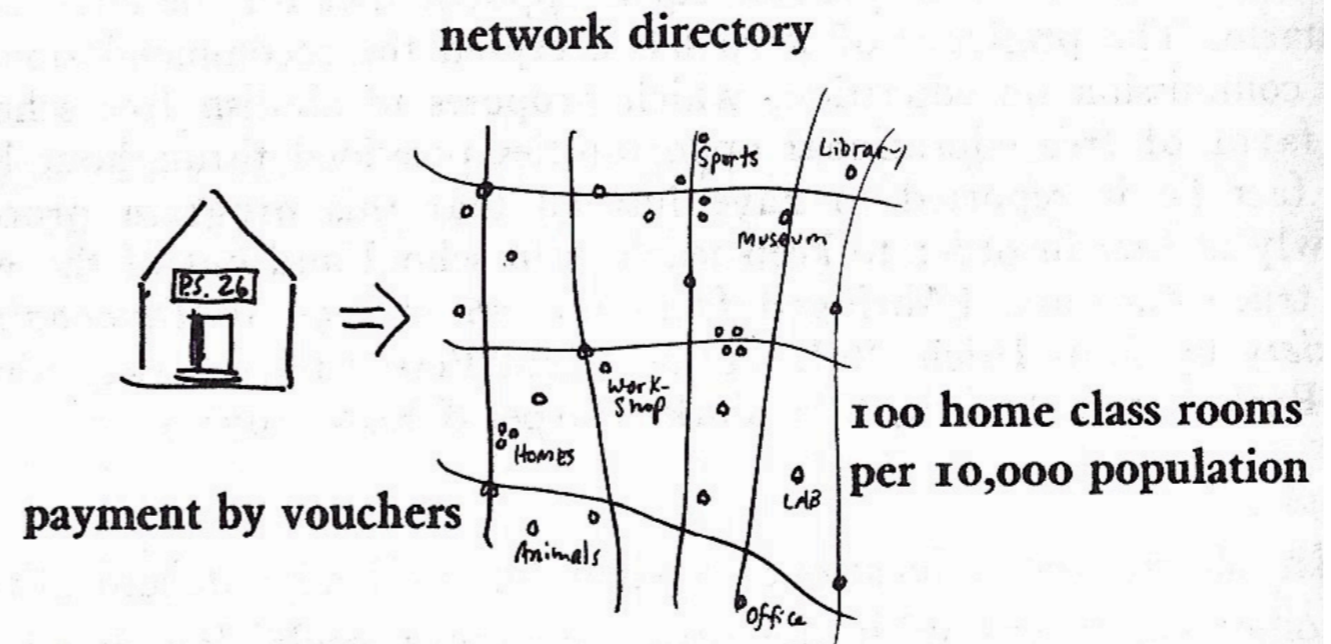
**a lot of good exists but scattered..... needs gathering and celebrating**



framework allows for many varieties of cultural expression



# 18 NETWORK OF LEARNING\*



learning ..... conversations, curiosity  
shared experience, exchanging ideas  
friendships decentralised

create opportunities and spaces  
throughout  
the community

Make/Shift Spaces !!



**Sikh and Sarge**  
**'pot luck' of conversations**

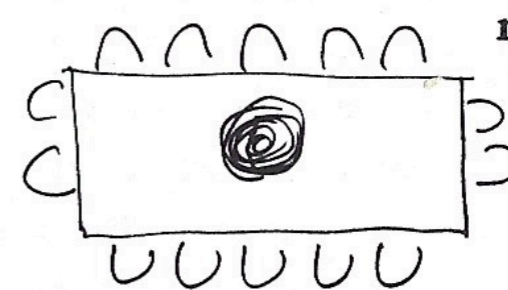


open up businesses eg Pic's peanut butter  
also simple bench

# 147 COMMUNAL EATING\*



a table



regular meal

people cook it themselves, in turn

**Without communal eating,  
no human group can hold together**

# Waitangi Day celebrated by thousands in Nelson at International Kai Festival

Sara Meij · 16:47, Feb 06 2018



MARTIN DE RUYTER/STUFF

The International Kai Festival at Whakatu Marae.

**Kai Festival**

**Thursday market at Isel Park**

**Kirby Lane etc**

**..... all great but where can subcultures meet regularly?**



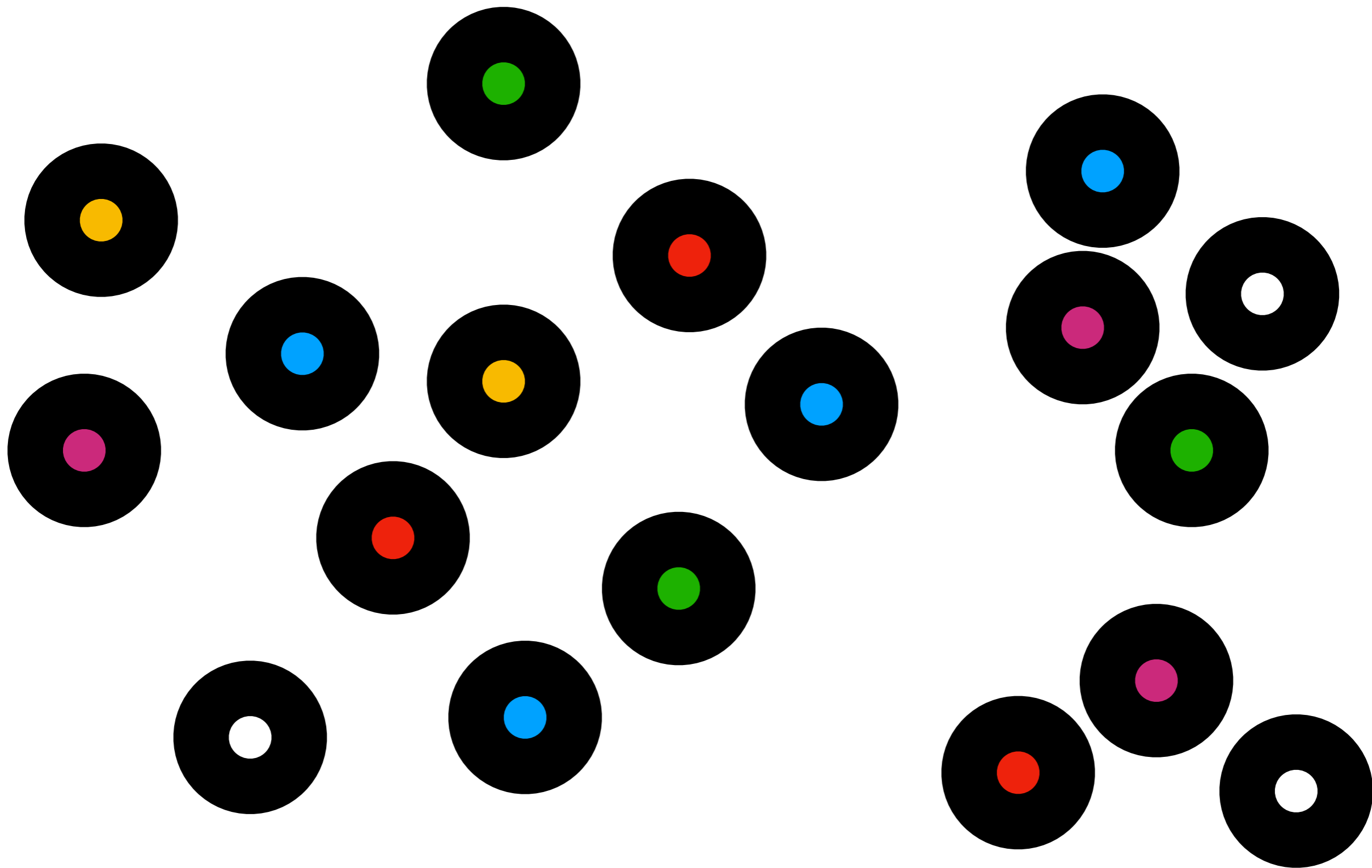
accessible spaces, simple benches and tables, shelter  
managed by the people who use them  
eg Tahunanui bar b q public area

OK,  
so how we start a process  
to enrich our existing patterns  
  
to show off our subcultures  
to meet new people and share ideas  
to wrap communal eating with music and conversation?  
  
on a daily basis, not just once a year



WHAT IF WHAKATU NELSON WAS FAMOUS FOR ITS REGIONAL SOUP?





**Poipoia te kākano, kia puāwai**

Nurture the seed, it will flourish

From the ground up