

# ***What if Whakatū- Nelson...***

**What if Nelson created housing  
above its public car parks?**

## Our city is growing

Urban living has long been central to New Zealand life and continues to be an enduring trend shaping local and international cities. Whakatū Nelson is no exception.

This trend can bring challenges. Common problems can include a lack of adequate housing, poor quality developments or increased pressure on natural resources.

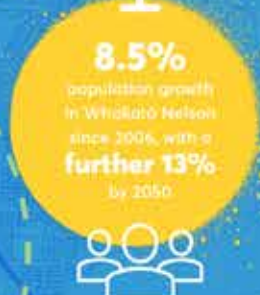
However, urban development that is smart, appropriately located, and of a suitably high quality, can positively contribute to the fabric of the city with safer streets, more vitality, extended shop hours, reductions in the need for driving and demand on parking, a healthier environment and increased wellbeing for city centre users.

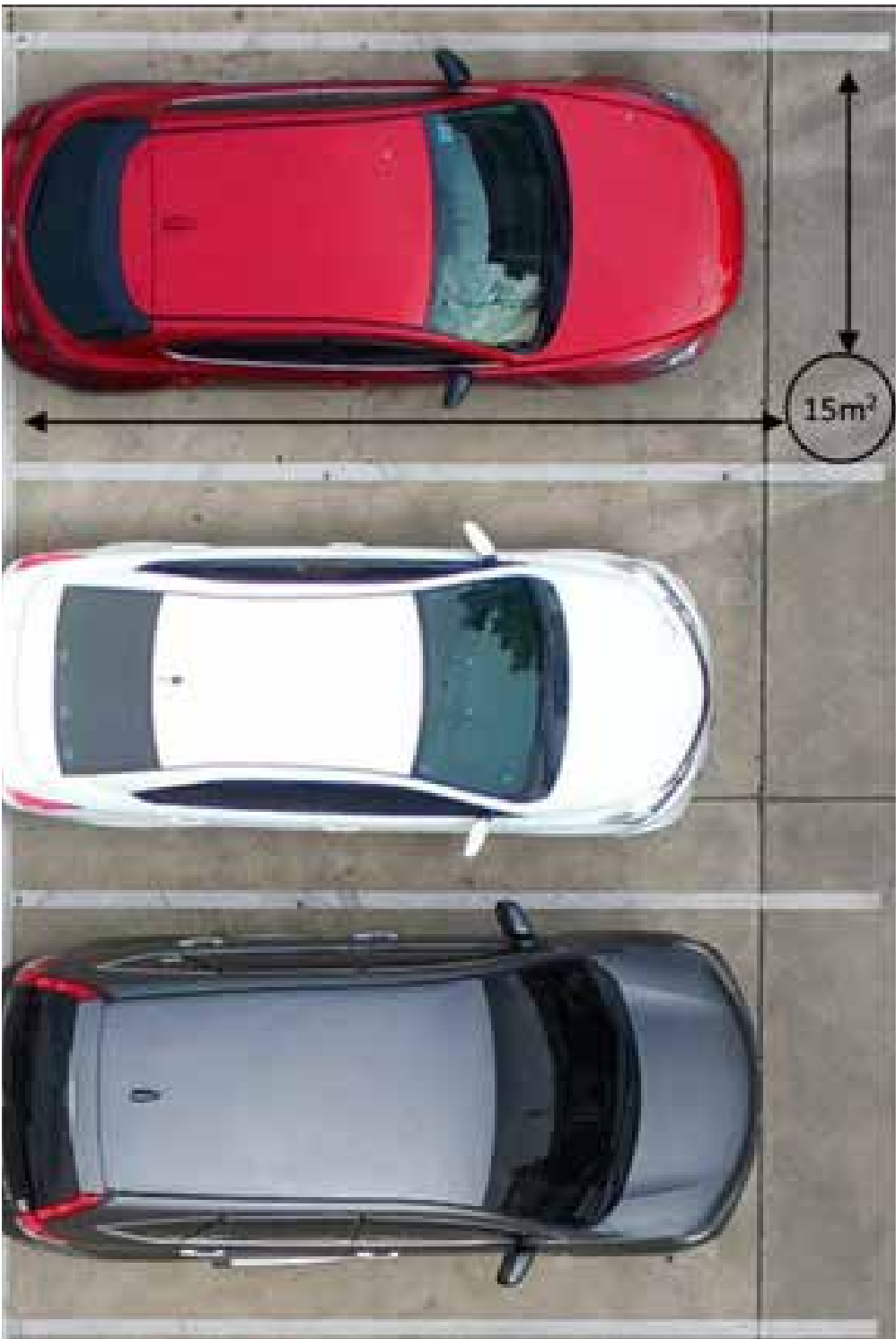
To accomplish this however, we need to enable more people to live in or nearby the City Centre. Currently less than 100 people live within 500m of the city centre, and only 1500 live within 1km.

With numerous smart development opportunities though, positive and sustainable growth is a realistic future for the city centre.



### Living trends





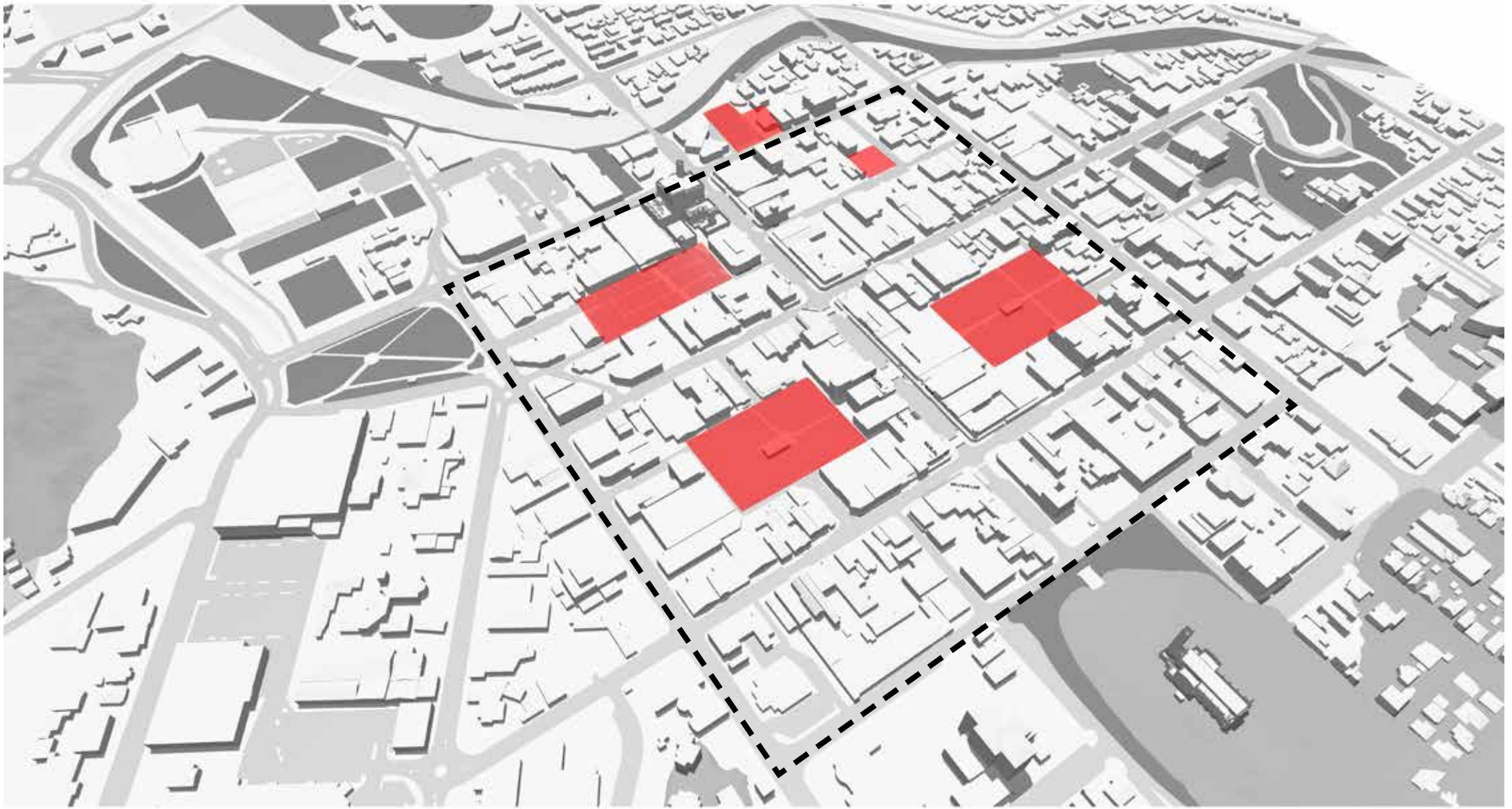




PHOTO BY: BRIGHTVIBES.COM





Public Transit Shelter

**Buxton Ca**  
Paid parking area

0180	Fees \$
8am - 5pm Monday -	
9am - 1pm Saturday	
Sunday & Public Holi	

Payment options:

