

What if Nelson created Cohousing Communities?

William Samuels - Architect

Bronwen Newton - Cohousing Developer

**How do we currently develop housing in
New Zealand?**





Berryfields



Berryfields subdivision in Richmond / greenfield development

What are some of the challenges with our current approach?

Expense - housing crisis

Suburban sprawl

Car oriented 'doughnut cities'

High environmental impact

Lack of community

Social disconnection / alienation

Lack of housing diversity to cater for:

- The elderly
- Young professionals
- Multigenerational families

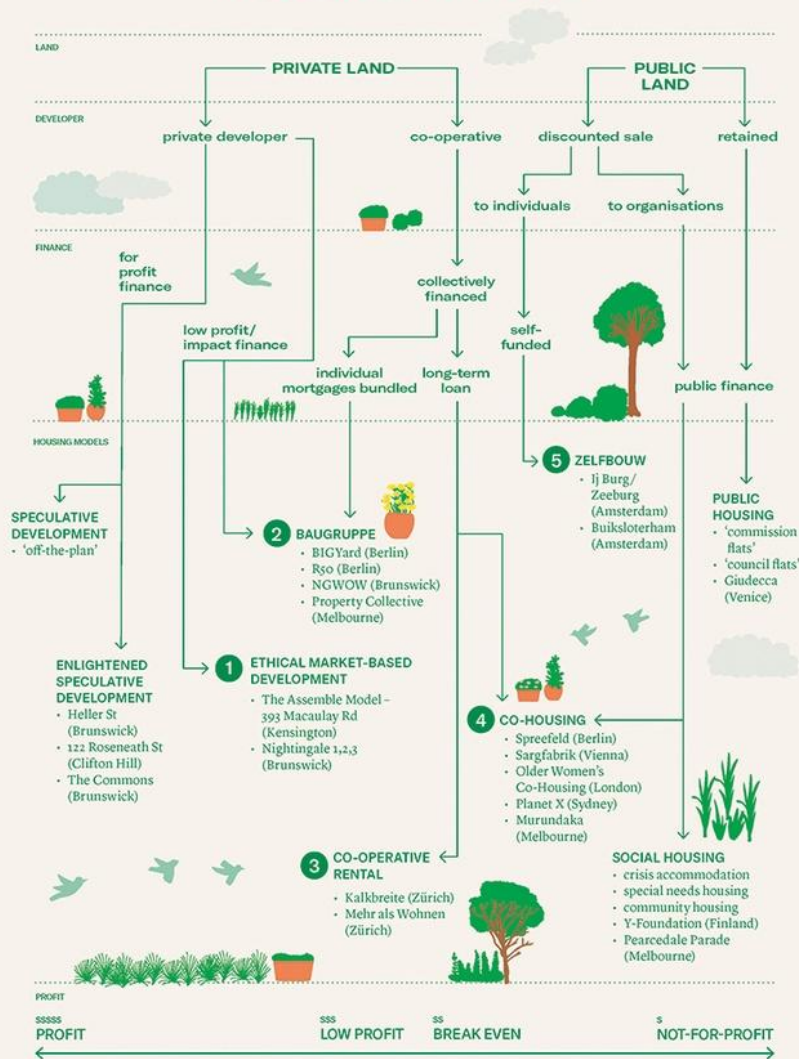
...anyone wanting something other than the quarter acre lifestyle



Plan Change 29
Nelson

What are some alternative approaches to housing?

REDESIGNING THE HOUSING MARKET



Housing spectrum



Market
housing

Apartments

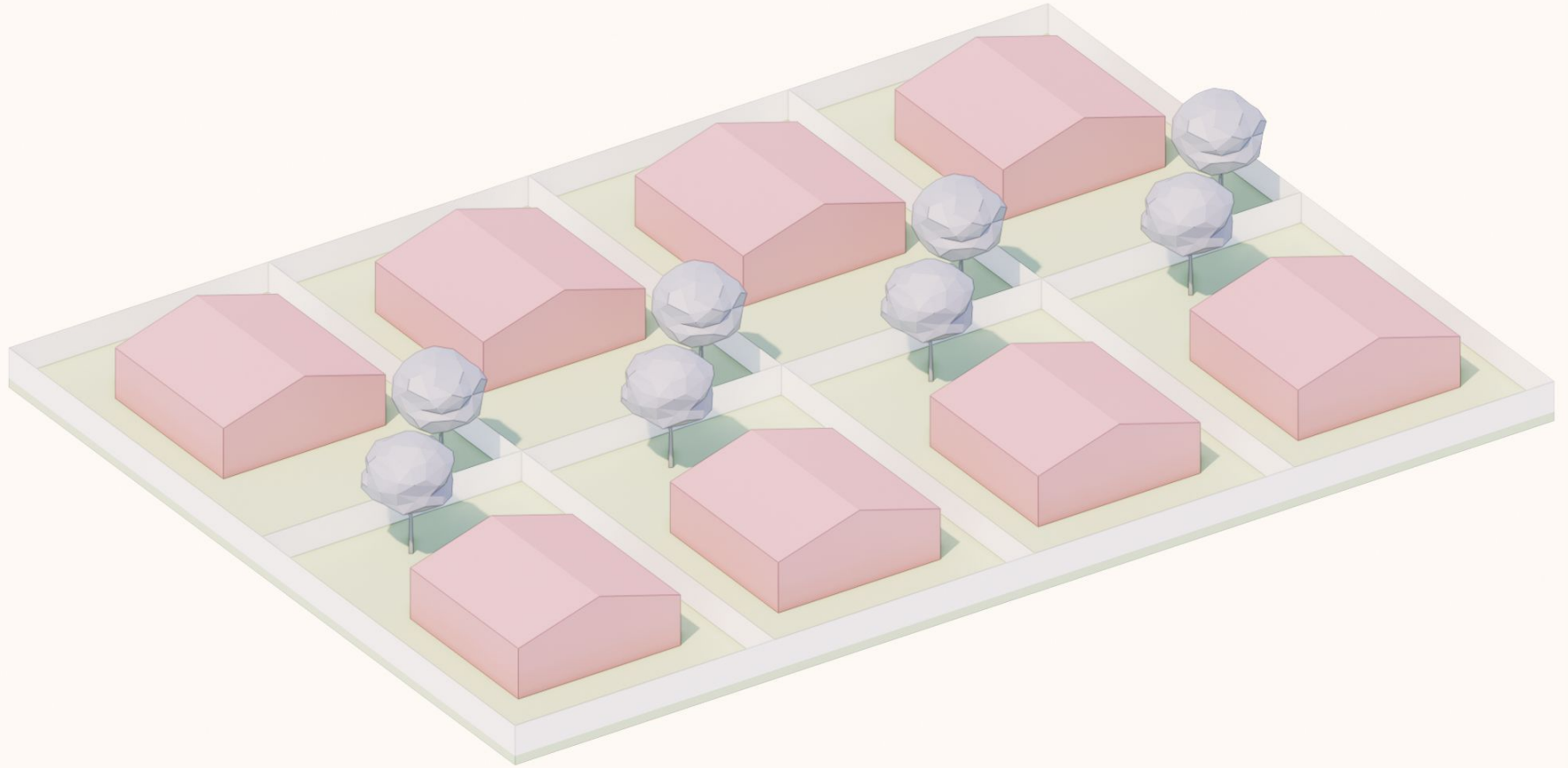
Cohousing &
housing co-ops

Public/social
housing

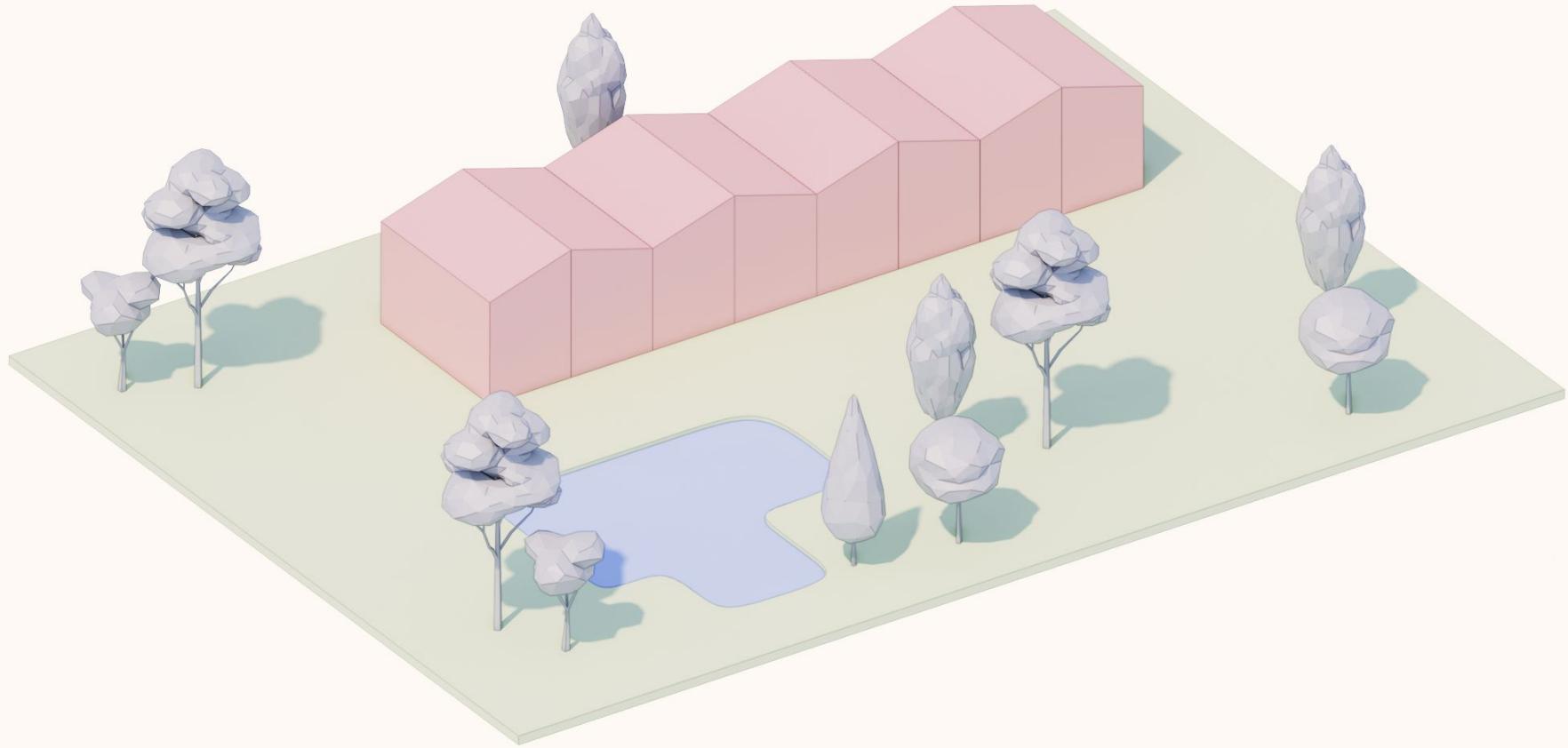


What is cohousing?

**An intentional community of private
homes clustered around shared spaces**

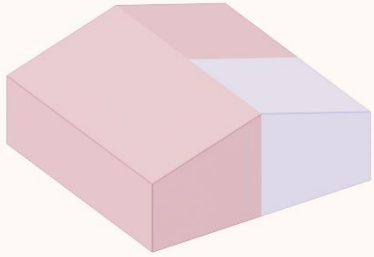


Traditional housing development

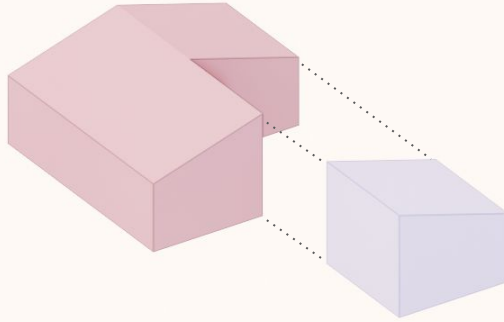


Cohousing development

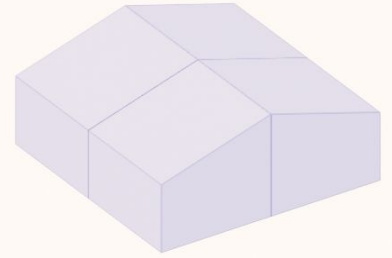
- **Dwellings are individual and self-contained**
- **Common spaces & recreational areas**
- **Shared amenities, such as:**
 - **Gardens**
 - **Services**
 - **Storage**
 - **Guest facilities**



Traditional house

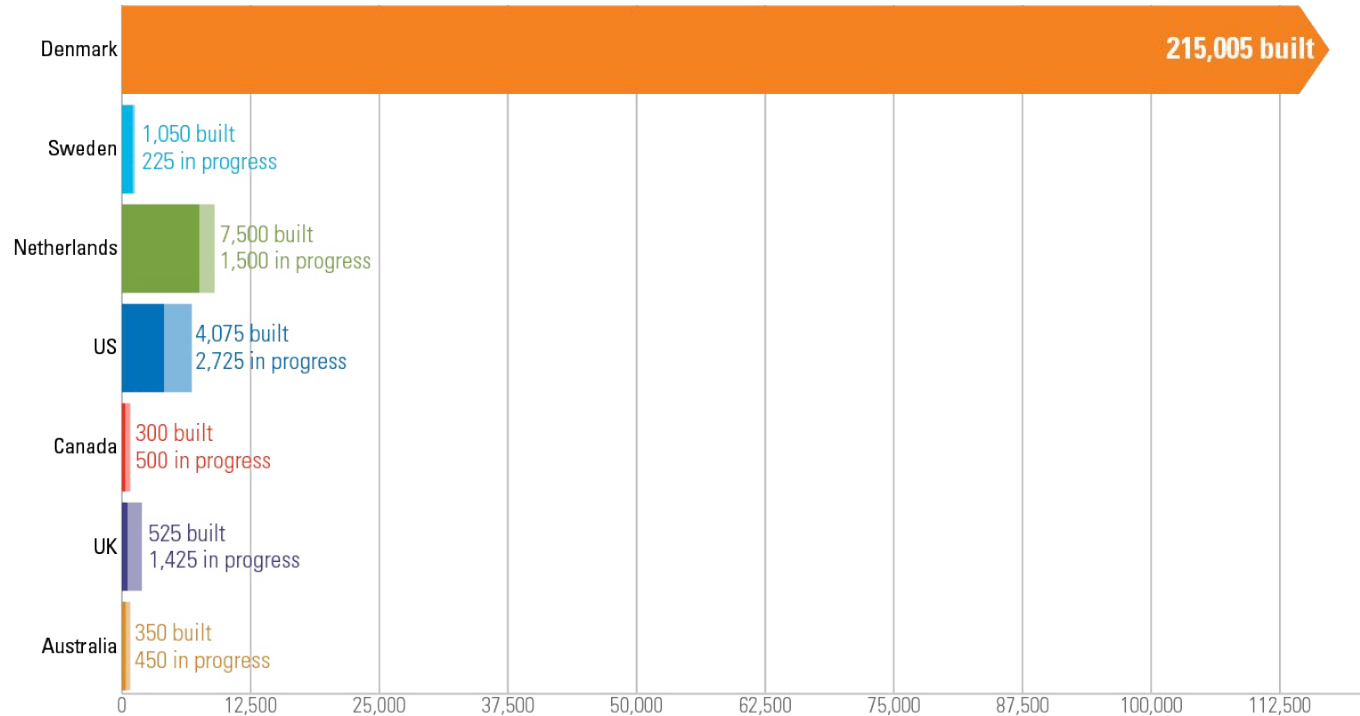


Secondary spaces



Common facilities

Cohousing began in Denmark in 1960s and is an increasingly popular form of housing throughout the world



Cohousing principles vary, but typically contain:

- Participatory process**
- Neighbourhood design**
- Common facilities**
- Resident management**
- Consensus decision-making**
- Neighbour support network**

Benefits

- Community
- Amenity
- Environmental
- Affordability



Resident led & developer led cohousing

Cohousing examples



Nightingale
Melbourne



Dwellings: 20
Commercial tenancies: 3









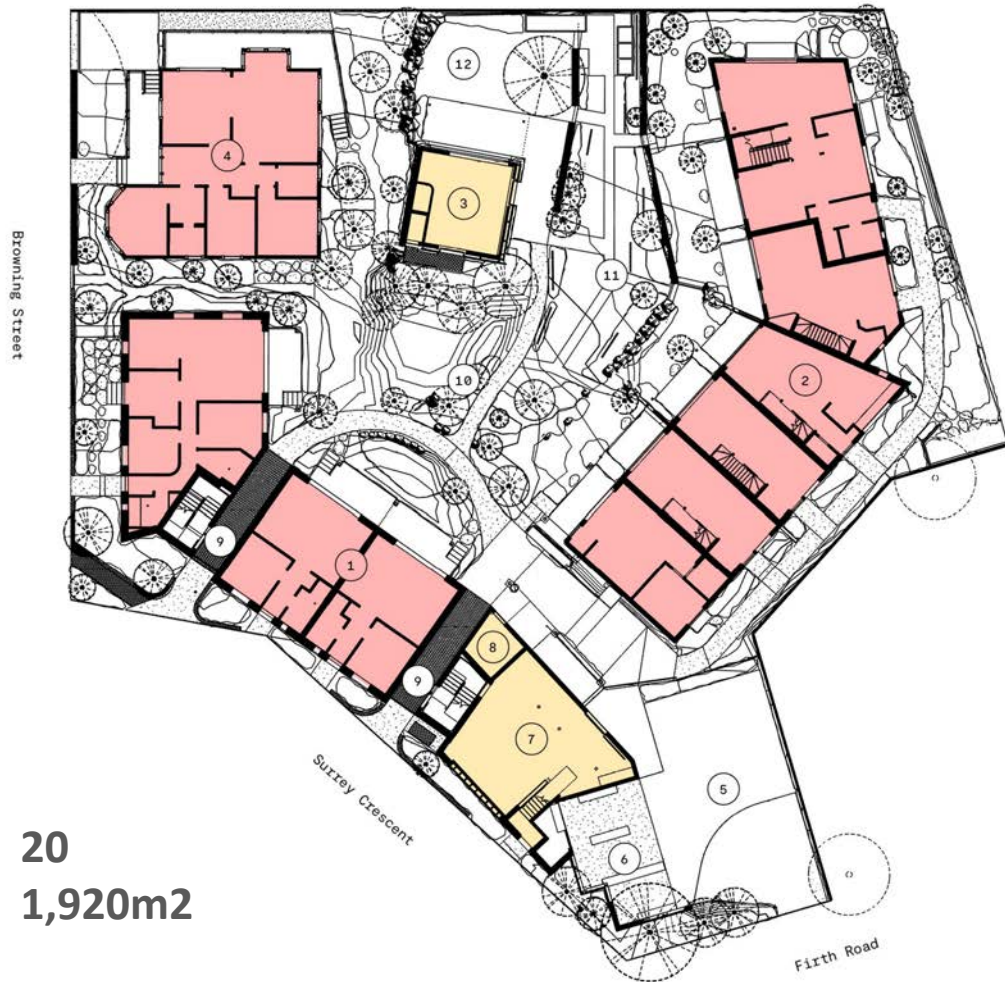






Cohaus
Auckland





Dwellings:
Built area:

20
1,920m²















Toiora High Street cohousing
Dunedin

Dwellings: 21
Passivehouse certified













Block Party
Wellington



Dwellings: 4
Site area: 600m²











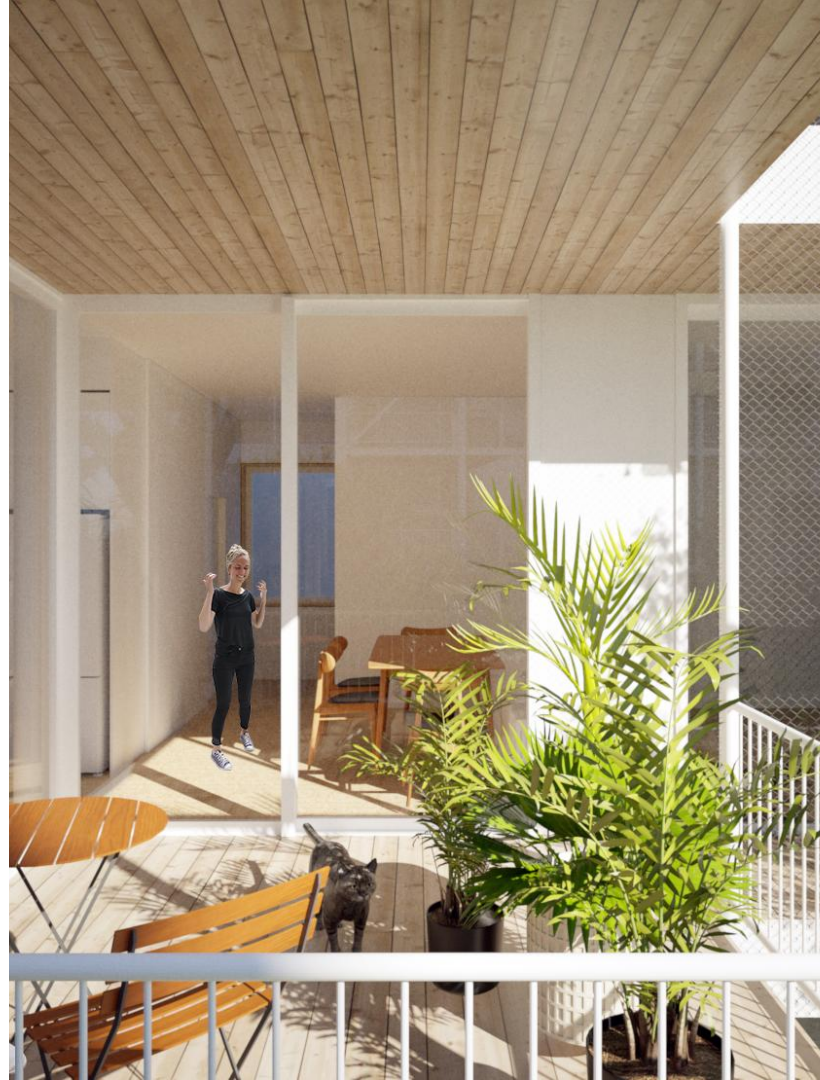


Urban Habitat Collective
Wellington











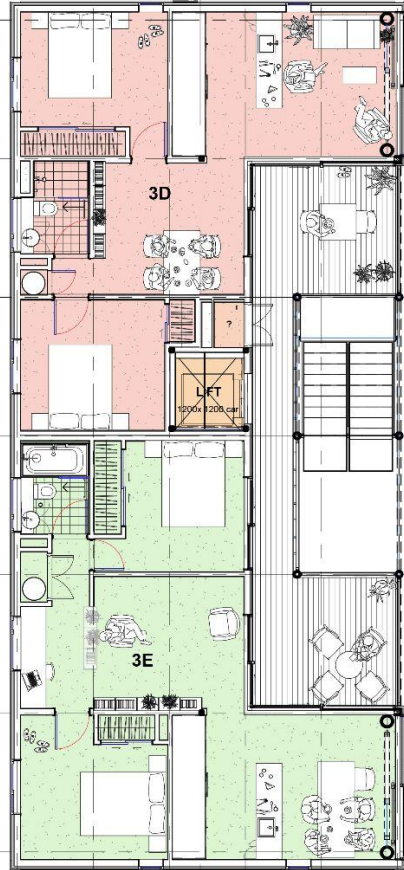
- **Everyone has a unique sweet spot for the balance between community and privacy.**
- **Building community is not the same as making friends.**
- **Pets - the metaphor for cohousing.**

1 2 3 4 5 6 7 8 9 10

1800 1800 1800 1800 1800 17050 3800 4400 3800



RC21



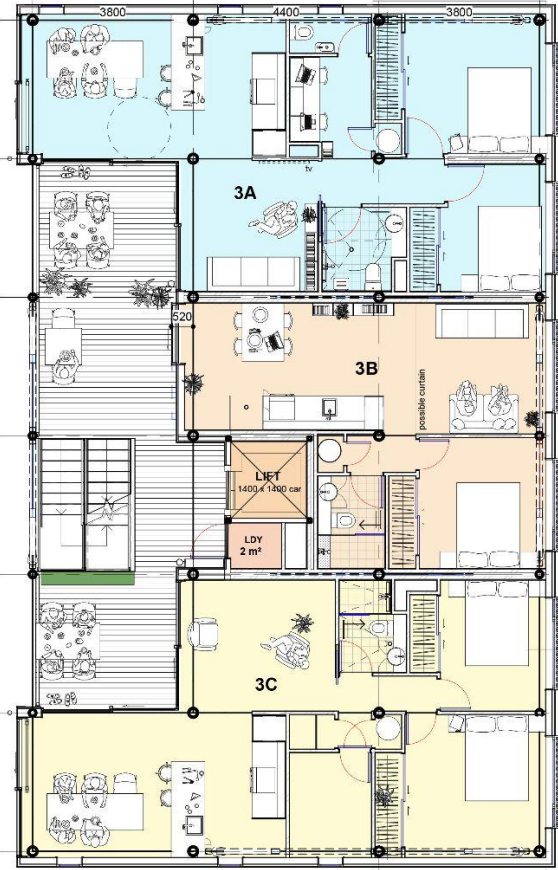
SMALL BUILDING
ground + 3 floors of apartment accommodation

Privacy gradient

plan notes as per drawing RC06

A
RC17

3280
3280
3280
3280
3280



BIG BUILDING
ground + 6 floors of apartment accommodation

1 2 3 4 5 6 7 8 9 10

1800 1800 1800 1800 1800 17050 3800 4400 3800



RC21

private
private

3D

LIFT
1200 x 1200 car

3E

private
private

SMALL BUILDING

ground + 3 floors of apartment accommodation

mostly
private

shared
deck

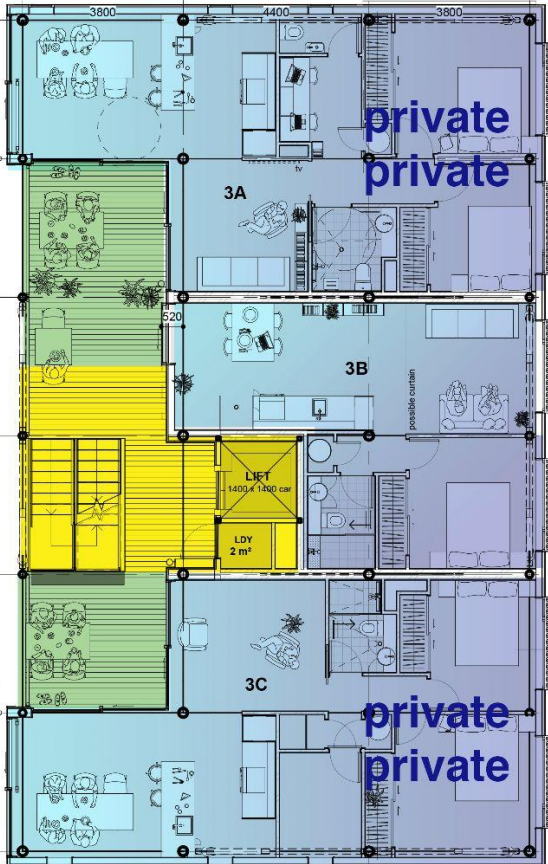
plan notes as per drawing RC06

circulation

private
deck

mostly
private

A
RC17



private
private

3A

3B

LIFT
1400 x 1400 car

L.D.Y
2 m²

3C

private
private

BIG BUILDING

ground + 6 floors of apartment accommodation



Takaka Cohousing Neighbourhood
Golden Bay



PARK

NATIVE
FOREST

N3

MĀRA

N2

N1

RURAL
FOOD GROWING

C1

MĀHANA STREET











PARK

NATIVE
FOREST

N3

MARA

RURAL
FOOD GROWING

N2

N1

C1

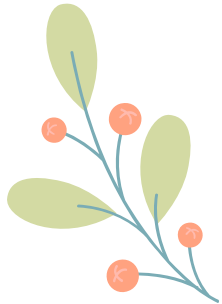
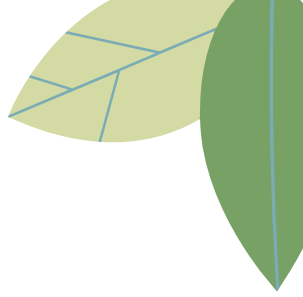
MORNING STREET

Takaka Cohousing Neighbourhood

A Cohousing project within a Community Land Trust

Our Purpose

Te Hapori Hauora provides regenerative solutions for the Mōhua bio-region through modelling sustainable living solutions, land regeneration, purpose driven enterprise and education.





Long term impacts

Social

Increase wellbeing, connection, sharing and resilience.

Housing

Create more “at cost”, beautiful, high performing homes.

Biodiversity

Forest regeneration and green space planting encourages birds and insects

Water Management

More green space and less hard surface helps manage flood risk.

Food Production

Organic, local food production increases resilience and knowledge.

Te Tiriti Partner

Respect and incorporate Mātauranga Māori



**What could cohousing look like in
Nelson?**